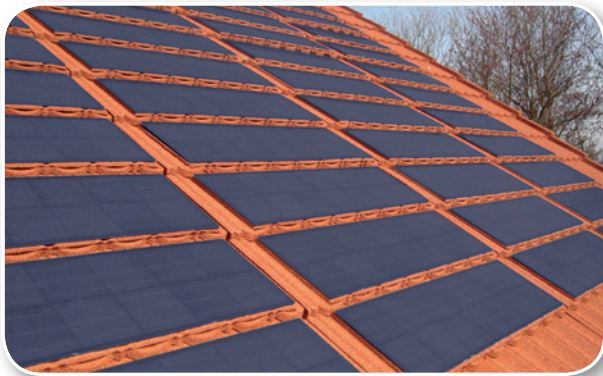


Get your home or building covered with a lightweight roof with integrated solar tiles!



- Harness energy from natural light in new build or refurb
- The system offsets the cost of the standard roof covering
- The mounting system is manufactured from lightweight aluminium and is merged into the roof line with internal natural cooling
- Life expectancy of the cell in excess of 25 years
- Supplied in complete kits to simplify your solar installation
- Solar panels are individual exchangeable
- Available for all Metrotile profiles

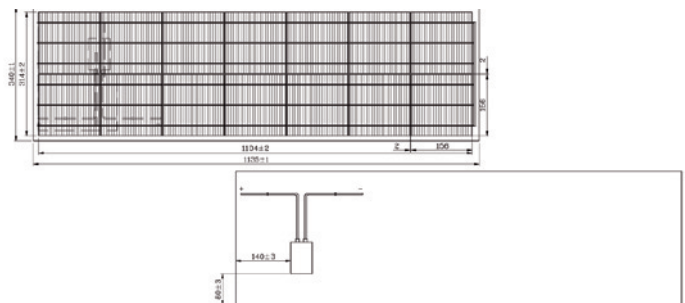
## Metrotile Lightpower MLP

The tiles are made from lightweight high grade steel with Zinc-Aluminium coating for incredible strength and resistance. Suitable for all roof shapes.



### Cell characteristics

Cell type	Crystalline silicon cells
Cell strings	1
N° of cells	14
Cell dimensions	156x156mm
Dimensions overall	1135mm (L) x 340mm (W) x 19mm (D)



### Electrical characteristics

Maximum Power (Pmax) – Nominal	60 Wp
Voltage at Pmax (Vmp)	7.25V
Current at Pmax (Imp)	8.2 A
Short circuit current (Isc)	8.6 A
Open-circuit voltage (Voc)	8.65 V
Module efficiency	15%
Maximum system voltage	600 V

### Temperature coefficients

Short circuit current (Isc)	0.05%/°C
Open-circuit voltage (Voc)	-0.36%/°C
Power	-0.47%/°C

### Peak power warranty

10 years minimum 90% of minimal guaranteed power  
25 years minimum 80% of minimal guaranteed power

### Quality and Safety

This laminate is manufactured in an ISO 9001-2008 certified factory. Produced in a TUV IEC 61215 & safety class 2 approved process. MCS accredited BAPT 8501.

### Temperature ratings

-20 to +60 °C storage and operating temperature